

KGL EVO

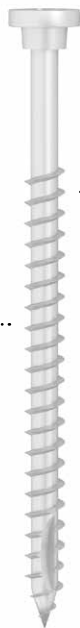


C4
EVO

CE
ETA 11/0030

VITE TESTA CONICA
CONICAL HEAD SCREW

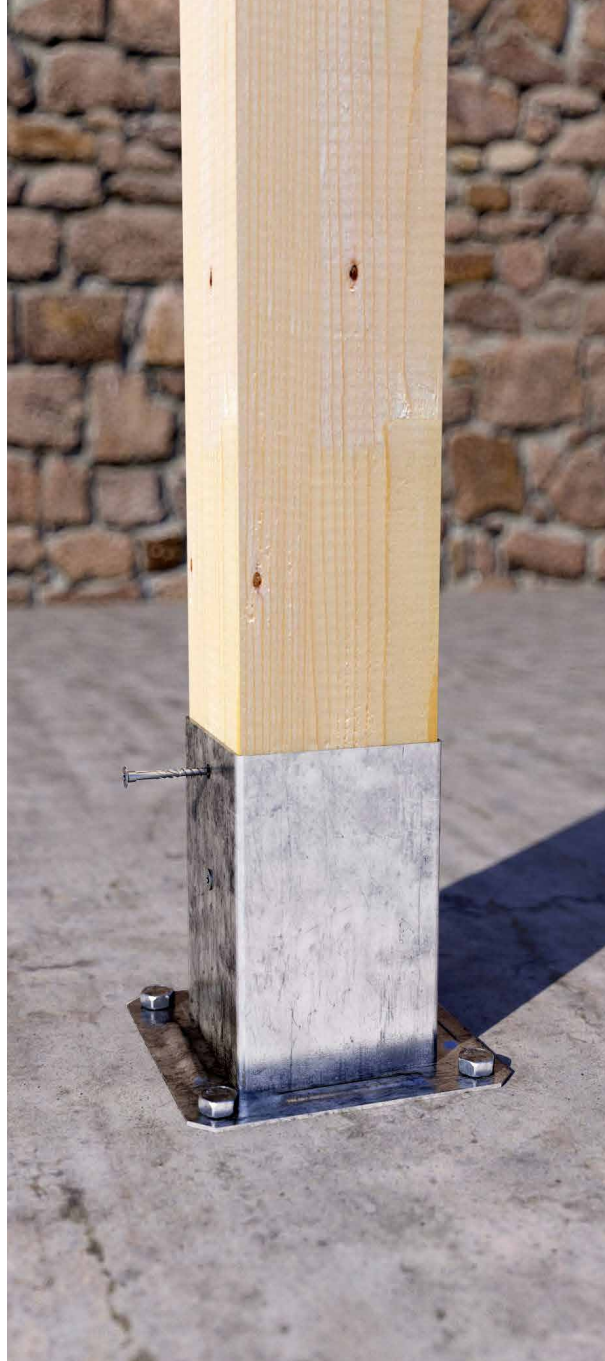
Testa extra forte per
giunzioni su acciaio
Extra-strong head for
joints on steel



Classe di
servizio 1, 2 e 3
Service classes 1,
2 and 3

Ideale per
portapilastrini
Ideal for
pillar-holders

KGL EVO Ø 8

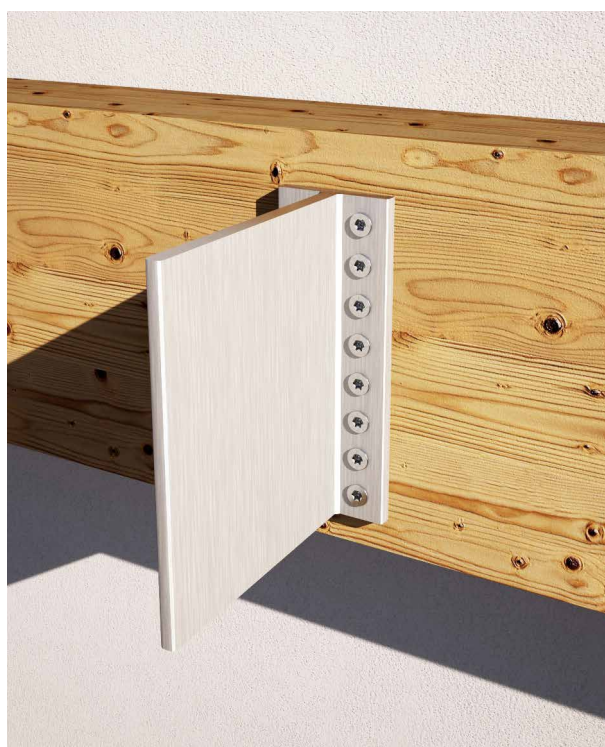


Ideale per staffa
ALUMINI HT
Ideal for ALUMINI
HT bracket




Classe di
servizio 1, 2 e 3
Service classes 1,
2 and 3

KGL EVO Ø 5




CODICI E DIMENSIONI CODES AND DIMENSIONS

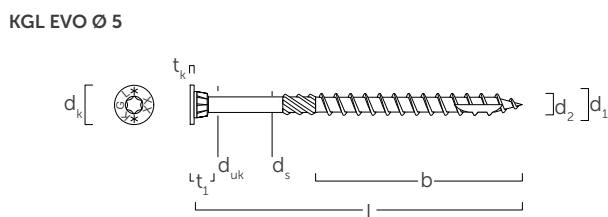
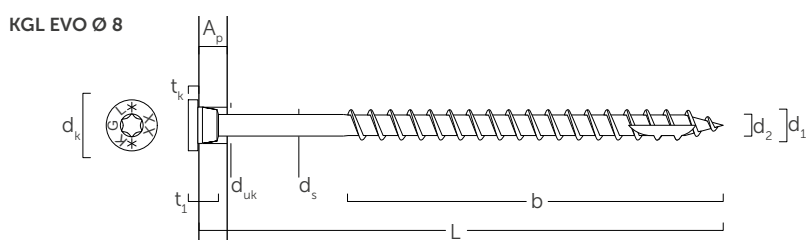
KGL EVO RIVESTIMENTO ANTICORROSIONE KGL EVO ANTI-RUST COATING

d_1 [mm]	CODICE CODE	L [mm]	b [mm]	A_t [mm]	A_p [mm]	
5 TX 25	KGL560C	60	35	25	1.0 ÷ 10.0	200

KGL EVO RIVESTIMENTO ANTICORROSIONE KGL EVO ANTI-RUST COATING

d_1 [mm]	CODICE CODE	L [mm]	b [mm]	A_p [mm]	
8 TX 40	KGL860C	60	52	1.0 ÷ 15.0	100

GEOMETRIA GEOMETRY



diametro nominale <i>nominal diameter</i>	d_1	[mm]	5	8
diametro testa <i>head diameter</i>	d_k	[mm]	9,65	14,50
diametro nocciolo <i>tip diameter</i>	d_2	[mm]	3,40	5,40
diametro gambo <i>shank diameter</i>	d_s	[mm]	3,65	5,80
spessore testa <i>head thickness</i>	t_1	[mm]	4,50	4,60
spessore rondella <i>washer thickness</i>	t_k	[mm]	1,00	3,40
diametro sottotesta <i>underhead diameter</i>	d_{uk}	[mm]	6,0	10,0
diametro preforo <i>pre-drilling hole diameter</i>	d_v	[mm]	3,0	5,0
momento caratteristico di snervamento <i>characteristic yield moment</i>	$M_{y,k}$	[Nmm]	5417,2	20057,5
parametro caratteristico di resistenza ad estrazione <i>characteristic withdrawal-resistance parameter</i>	$f_{ax,k}$	[N/mm ²]	11,7	11,7
parametro caratteristico di penetrazione della testa <i>characteristic head-pull-through parameter</i>	$f_{head,k}$	[N/mm ²]	10,5	10,5
resistenza caratteristica a trazione <i>characteristic tensile strength</i>	$f_{tens,k}$	[kN]	7,9	20,1